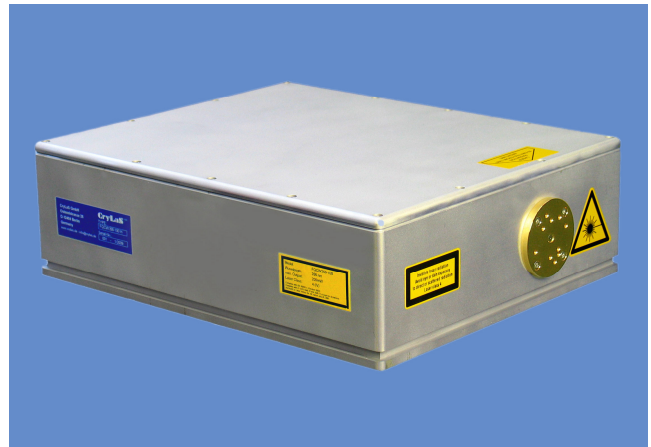


FQCW 266-100

Diode Pumped Continuous Wave Solid State Laser

- 266 nm
- Continuous Wave
- Single Frequency
- Low Noise
- TEM₀₀
- Up to 100 mW
- Air cooled



inspection · DVD mastering · analytics

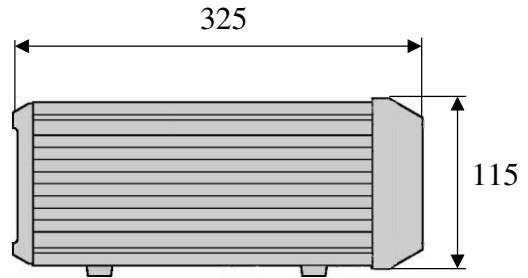
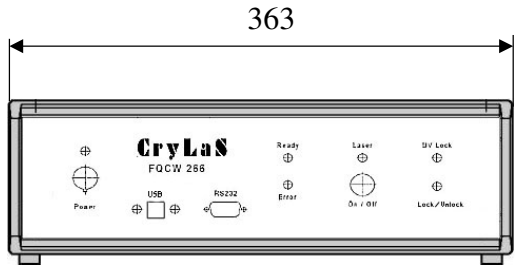
	Model	FQCW 266-100
Optical Data	Output Power	100 mW
	Wavelength	266 nm
	Linewidth	< 1 MHz
	Mode Quality M ²	< 1.3
	Polarization	vertical, > 100:1
	Beam Diameter	0.6 mm ± 20 %
	Beam Divergence (full angle)	< 0.8 mrad
	Beam Pointing Stability ¹⁾	< 3 µrad / K
	Static Alignment Tolerance	Position < ± 0.25 mm, Angle < ± 2.5 mrad
	Power Stability ¹⁾ (8 h, 1 s average)	< 1% rms
Noise (100 Hz - 10 MHz)	< 0.5% rms	
Electrical Data	Line Voltage	90 V - 250 V AC
	Power Consumption Mean (Max)	100 W (200 W)
	Communication Interface	USB / RS 232
	Safety Equipment	key switch, interlock
Miscellaneous	Dimensions (control unit)	363 x 325 x 115 mm ³
	Weight (control unit)	5.3 kg
	Dimensions (laser head)	305 x 248 x 91 mm ³
	Weight (laser head)	10 kg
	Operating temperature	20 °C to 35 °C non-condensing
	Warm-up Time (cold start)	< 10 minutes

Notes

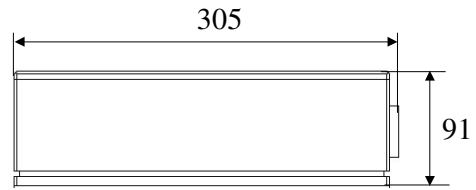
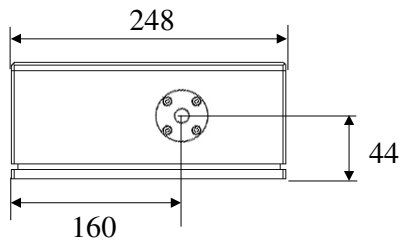
1) After 15 minutes warm-up in the temperature range 20 - 35 °C, temperature change < 1 °C/hour.

Dimensions

Control Unit:



Laser Head:



All dimensions in mm

Laser Warning

The FQCW 266 lasers are class 4 according to IEC 60825-1.



Model:	FQCW266-100
Wavelength:	266 nm
max. Output:	200 mW (cw)
Laser Class:	4 (IV)
<small>Complies with IEC 60825.1 (October 2003) Complies with 21 CFR 1040.10 and 1040.11 except for deviations pursuant to Laser Notice No. 50, dated July 26, 2001</small>	

