

MAX and WIZ interferometers



Single fiber



Multi-fiber



Phase shift, white light



Scratch detection



Auto focus



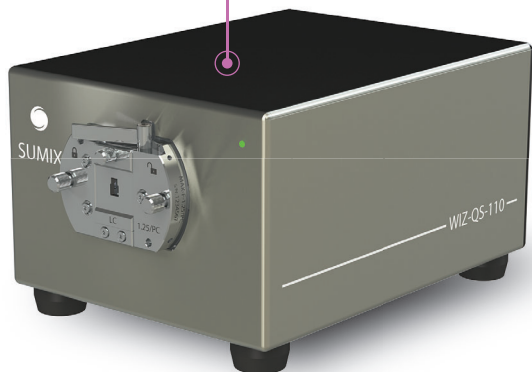
Industry standards



PASS/FAIL verdict

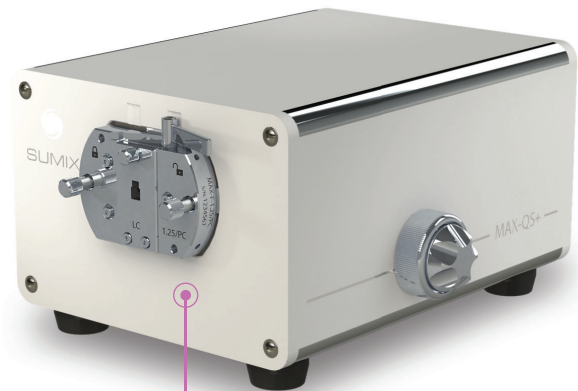
WIZ-QS-110

for single fiber connectors



MAX-QS+

for single fiber connectors



MAX-QM+

for single and multi-fiber connectors, including MT16/32



MAX-Quantum

for single and multi-fiber connectors, including MT16/32



| | Inspection of Single Fiber | | Inspection of Single and Multi-Fiber | |
|--------------------------------------|----------------------------|-----------|--------------------------------------|-------------------------------|
| | WIZ-QS-110 | MAX-QS+ | MAX-QM+ | MAX-Quantum |
| Inspection objects: | | | | |
| Single Fiber Patchcords | ● | ● | ● | ● |
| MIL Spec Termini | ● | ● | ● | ● |
| Cleaved bare fiber | ● | ● | ○ | ● |
| SMA | ○ | ○ | ● | ● |
| MT, MPO 12/16, Cleaved ribbon | | | ● | ● |
| Application: | | | | |
| Production, QA & Field Laboratories | ● | ● | ● | ● |
| Features and Specifications: | | | | |
| Anomalies detection | | ● | | ● |
| Whitelight mode | ● | ● | ● | ● |
| Optical resolution, μm | 2.5 | 1.1 | 2.2 | 1.47 |
| Field of view, mm | 1.2 × 0.9 | 1.1 × 0.9 | 5.6 × 3.5 | 6.0 × 4.4 |
| Measurement time | 1.3 sec | 2 sec | 3 sec (MT12), 1 sec (SF) | 7 sec (MT12), 1.4 sec (SF) |
| Scan range for fiber height, μm | 100 | 100 | 100 | 100 |
| Compact size | ● | ● | ● | ● |
| Calibration-free upon fixture change | ● | ● | ● | ● |
| Auto-focus | ● | ● | ● | ● |
| Data-base connectivity | ● | ● | ● | ● |
| Side+Front View compatibility | | | ● | ● |
| Price | ★ | ★★ | ★★★ | ★★★★ |



Industry-leading MaxInspect™ software

The software is provided with predefined Pass/Fail criteria per IEC standards or you can set your own parameters for specific applications (e.g. when launching a new product).

MaxInspect™ software provides the following **tools for integration** into customer's manufacturing systems:

- Export of results to Excel/CSV files;
- Direct connection to customer's SQL database;
- MaxInspect™ WebSocket API;
- Centralized MaxInspect™ database.

Inspection MT12-PC **Result**

Result2604

Name: Result2604
 Date & Time: 3/14/2016 4:40:12 PM
 Task name: MT12-PC
 Device SN, Fixture SN: MAX-QM 37003, 324007
 Customer:
 Technician: Admin
 Company: Sumix
 Core dip algorithm: Parabolic
 Fitting regions: L=2900μm; H=675μm; E=140μm; F=50μm; CumA=20%; Top=3%
 Pass/Fail standard: IEC 61755-3-32 (based on)
 Calculation standard: IEC 61300-3-30 Ed2

PASS

| Measurement Parameter | Units | Pass/Fail Limits | | Measured Value | Verdict |
|-------------------------------|-------|------------------|----------|----------------|---------|
| | | Min | Max | | |
| Ferrule Radius of Curvature X | mm | -10000.00* | 2000.00* | -12909.73 | PASS |
| Ferrule Radius of Curvature Y | mm | 5.00 | | 124.01 | PASS |
| Tilt Angle X | ° | -0.1500 | 0.1500 | 0.0372 | PASS |
| Tilt Angle Y | ° | -0.2000 | 0.2000 | 0.0121 | PASS |
| Dome Height | mm | | | 360.65 | N/A |
| Geometry Limit | | 10.50 | | N/A | N/A |

* - Pass value must be less than Min and greater than Max

| Measurement Parameter | Units | Pass/Fail Limits | | Measured Value | Verdict |
|---------------------------|-------|------------------|--------|----------------|---------|
| | | Min | Max | | |
| Max-Min | nm | | | 195.37 | N/A |
| Max Adj Diff | nm | 0.00 | 500.00 | 75.65 | PASS |
| Minus Coplanarity | nm | 0.00 | 300.00 | 92.73 | PASS |
| Coplanarity Plane Angle X | ° | | | 0.0004 | N/A |

| Measurement Parameter | Units | Pass/Fail Limits | | Fiber Number / Measured Value / Verdict | | | | | | | | | | | |
|-----------------------|-------|------------------|------|---|---------|---------|---------|---------|---------|---------|---------|---------|---------|---------|---------|
| | | Min | Max | 1 | 2 | 3 | 4 | 5 | 6 | 7 | 8 | 9 | 10 | 11 | 12 |
| Height | nm | 1000 | 3500 | 2517.97 | 2519.43 | 2484.31 | 2432.01 | 2388.91 | 2464.56 | 2468.24 | 2444.93 | 2476.63 | 2551.22 | 2584.10 | 2584.28 |
| ROC | mm | 1 | | N/A | N/A | N/A | N/A | N/A | N/A | N/A | N/A | N/A | N/A | N/A | N/A |
| Core Dip | nm | | | 31 | 42 | 38 | 34 | 60 | 16 | 62 | 42 | 50 | 71 | 34 | 40 |

3D Surface | Live View Snapshot | 3D Subtracted Surface | 2D Substructure

3532 Seagate Way, Suite 100, Oceanside, CA 92056, USA

www.sumix.com

E-mail: info-team@sumix.com

Tel.: +1 (877) 233-3385