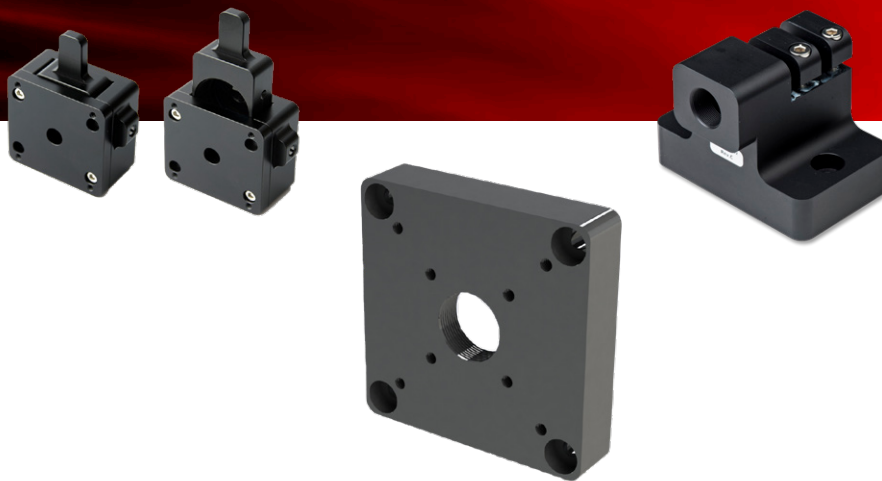


SuperK PARTS

SuperK included and optional parts



ALL THE SMALL PARTS THAT GO WITH YOUR SUPERK LASER

All parts are Plug and Play

The SuperK lasers come with a range of included small parts and accessories.

On the following pages, you will find an overview of included and additional accessories.

Included parts and accessories

- Get a quick overview of all the cables and accessories you can use with your SuperK laser
- All parts are Plug and Play

SUPERK PARTS

Included parts

Depending on the laser configuration and accessories, these parts are included. You can also buy them separately.

Door interlock connector - part number A911-100-005

Pre-wired connector for the interlock loop circuit.



BUS def eater - part number A911-100-007

Bus termination connector for the bus interface.



BUS cable - part number A911-100-006

Our proprietary BUS communication cable to connect optical accessories.



BNC cable - part number A911-100-008

Connects external equipment to the lasers.



Included parts

Depending on the laser configuration and accessories, these parts are included. You can also buy them separately.

Spare keys for SuperK EVO

EVO/ COMPACT ON/OFF key switch



Spare keys for SuperK

EXTREME/FIANIUM ON/OFF key switch



SuperK tool kit

Basic tool kit for installation and operation of the SuperK product range.



USB type A to type B cable - part number A911-100-004

USB communication cable that connects a local PC to the laser.



Accessories

SuperK FIBER DELIVERY holder - part number A000-000-003

This holder is designed to securely fasten the SuperK FIBER DELIVERY when you use it in free-space setups on breadboards and optical tables. The holder is compatible with both metric and imperial optical tables and keeps the output at 40 mm. Additionally, the holder fits 1" filter mounts and has a 30x30 mm (4xM3) layout for additional parts interface.



SuperK 19" rack mount - part number A000-000-001

The rack mount ensures a secure mounting of the SuperK EXTREME and SuperK FIANIUM into a 19" rack system.



SuperK Adaptor for lens tube and cage system - part number A000-000-006

The SuperK lens tube and cage system adaptor fit both 1/2" and 1" lens tubes, as well as popular cage systems with 30 or 16 mm pitch. Threads for lens tubes are SM05 and SM1, respectively, and threads for cage systems are 4-40.



Use the holes for the SuperK CONNECT to mount the adaptor directly on the output face of any SuperK accessory. Mount with M3x10 cylinder hex screws. On one side, there is a 1" lens tube, on the other, a 1/2" lens tube. You can find threads for 30 mm cage rods on both sides and 16 mm rods on the same side as the 1/2" lens tube mount.

SuperK collimator holder - part number A000-000-002

The SuperK collimator holder is designed to securely fasten the output collimator of a SuperK laser or FIBER DELIVERY system when you use it in free-space setups on breadboards and optical tables. The output side has an SM05 thread for mounting of 1/2" lens tubes.



External filter holder - part numbers A000-000-004/005

The external filter holder fits all our filtering accessories before the fiber coupling and lets you add any standard 1" filter in the beam path. For extra security, the filter holder has a build-in shutter that closes the aperture when the filter is removed.

Use the part number A000-000-004 to order one, and A000-000-005 to order two filter holders.



SuperK USB adaptor kit - part number A911-100-103

This adaptor lets you control NKT Photonics lasers and accessories, equipped with an RS485 interface, from a PC. The adaptor also provides a 12-volt supply for the SuperK accessories connected to the interlock bus interface as well as the necessary interlock signals for secure laser operations.



All NKT Photonics products are produced under our quality management system certified in accordance with the ISO 9001:2015 standard.

